

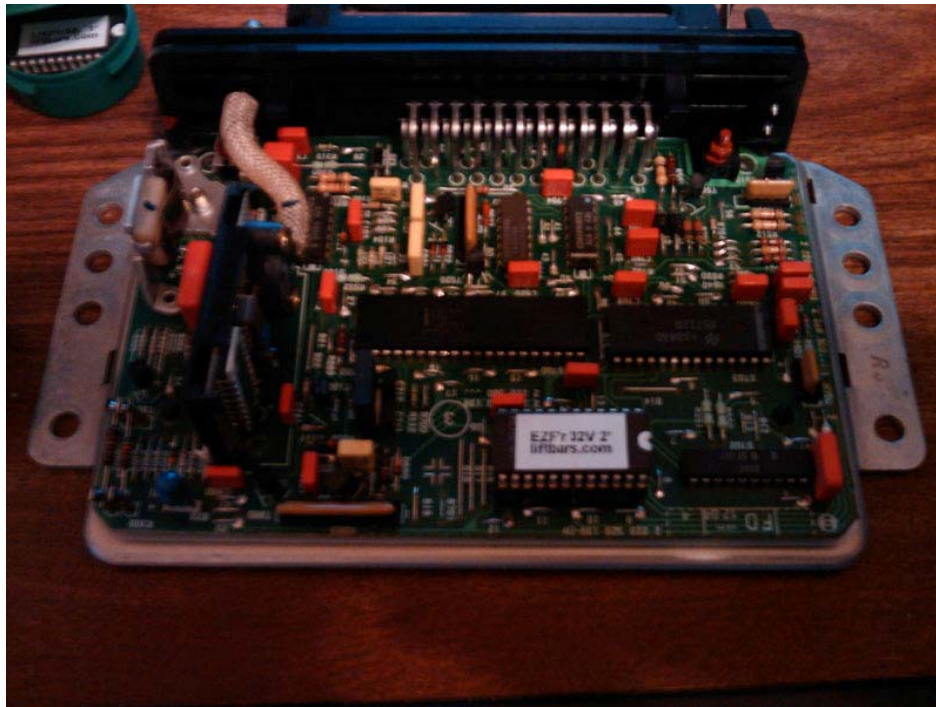
## EZF'r



Starting with the EZF, there are tabs around the perimeter of the case that must be pried up. EZF is the computer with the vacuum port. After removing the case, the circuit board will be exposed (attached to the flat part of the case.)

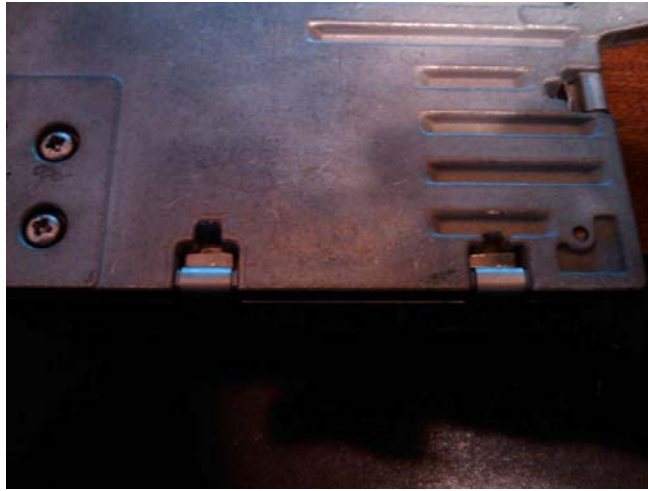


At the top of the picture, the stock chip sits in a socket. Apply gentle pressure underneath with a small screwdriver. Take care not to touch the pins if you can help it. Also, try to remove the chip evenly to avoid bending the pins. It's not unusual to bend one of the corners as you remove it. Notice the notch in the chip and the notch on the socket as well.

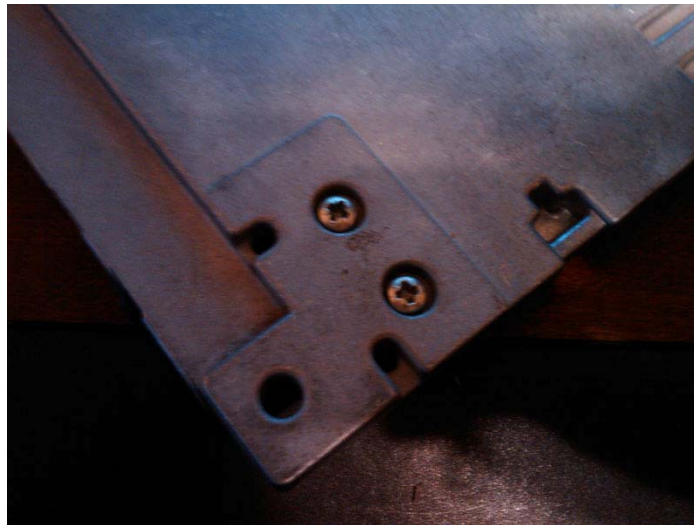


Install the new chip with the dotted side (in this case, marked clearly in white) on the notched side of the chip holder. The socket that comes on the chip is probably intended to make sure the pins don't get bent. You can install the EZF chip with or without, it shouldn't matter much. Reassemble the case and bend the tabs back around to make a firm fit.

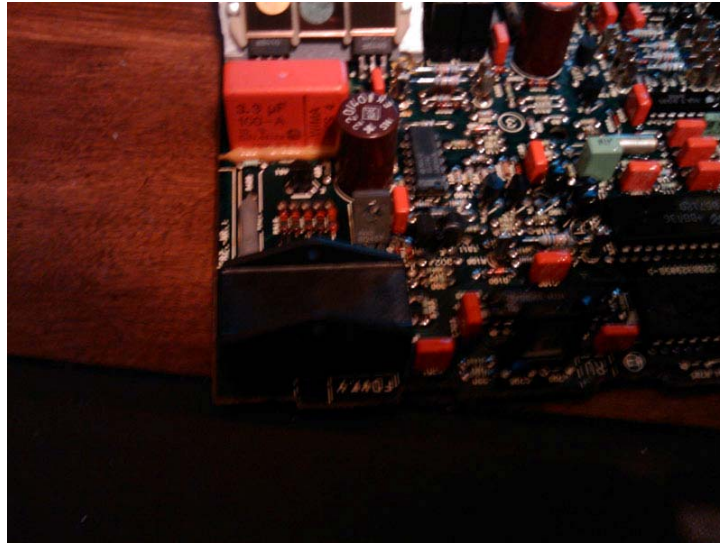
## LH'r



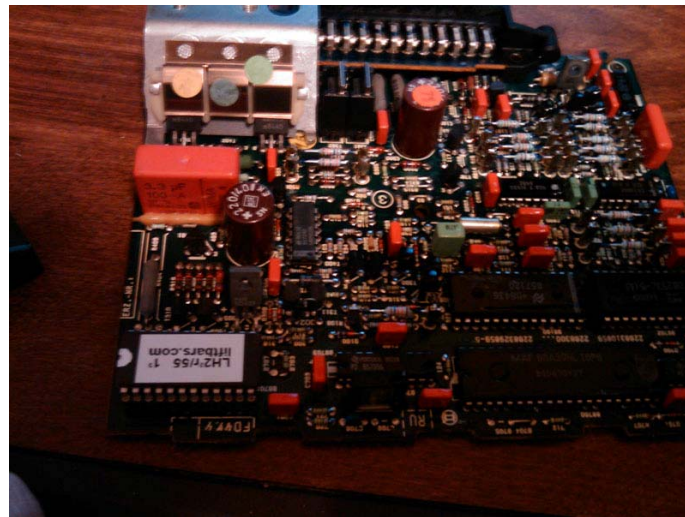
These tabs must also be pried up to allow the cover to come off. Being recessed, they can be a little tricky, but on mine, all but one came up easily with a screwdriver slid through the notch and underneath the tab. The last one I used a jeweler's screwdriver on the upper part of the tab. Be careful not to break them.



These screws must come out as well, they're attaching some transistors to the big metal plate for cooling purposes. Also, the Philips screw that holds the plug retainer must be removed to allow access to a second Philips screw beneath it. Pay attention to the plug retainer clip orientation, although if you forget which way it goes, it installs in the way that makes it inconvenient to get the second screw out.



Once inside, there are three black clips that retain the board to the inside of the case, just pull them back gently and free the mainboard. Gently pull the board out. The LH chip is under this black plastic cover. It just pulls off.



The new LH2'r installed. Again, pay attention to the orientation of the notch on the chip and make sure it matches the notch on the socket. In this case, you'll need to separate the LH2'r from the shipping socket, as the board will not seat with the extra height. It's very easy to accidentally bend the pins when removing the shipping socket, so be careful.

After installing the new chip, slide the board back in using the plug socket to guide you and snap the mainboard back into the plastic clips. Replace the plate on top of the case, and remember the screws for the transistors, they serve a purpose!

Also, make sure your new fuel pressure regulator is installed before driving the car, as the new processor is designed for the added fuel flow, which means that you would potentially run uncorrectably lean without the appropriate fuel pressure to the injectors.