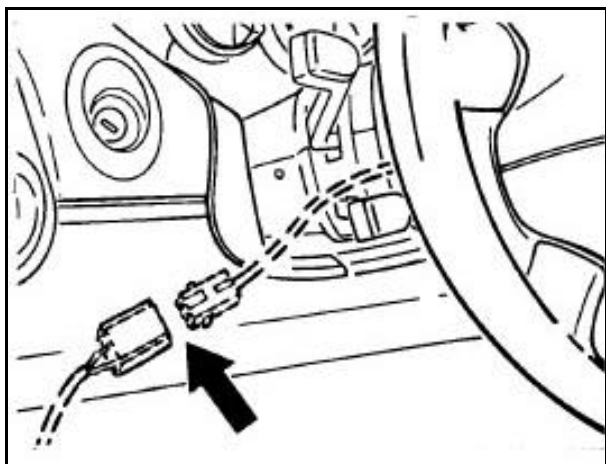


B8.1 Pre-treatment

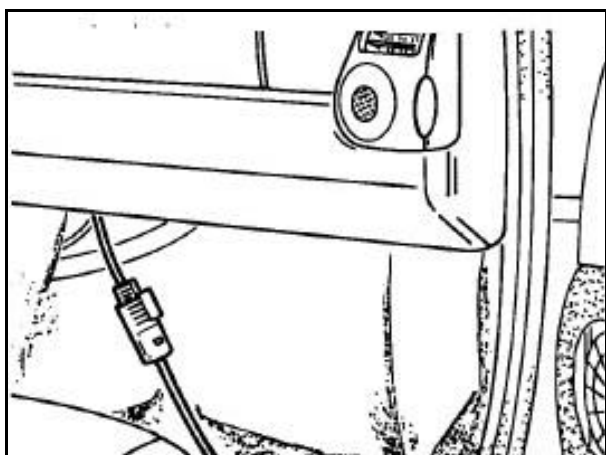
B8.1.1 Pyrotechnics



Connecting ignition tool

Driver's side

Ignition cable A directly to the 2-pole plug for the contact unit (below the steering column). Place the ignition device in front of the vehicle through the door gap.



Passenger's side

As of type 993, the passenger's airbag only has an ignition pellet. Use ignition cables 9567 and 9566. Place the ignition device in front of the vehicle through the door gap.

Removing the airbag units

(Carrera 2 / 4, Turbo)

Observe the waiting period after disconnecting the battery

Driver's airbag:

- The gas generator is held in place with 2 T30 socket Torx screws which must be removed from the side of the steering wheel base. The entire airbag unit can then be removed.

Passenger's airbag:

- Remove glove compartment.
- Undo 1 M8 holder screw.
- Remove radio/heating regulator.
- Remove knee protector trim.
- Remove bottom airbag flap (3 screws) and top flap (4 screws).
- Unscrew 4 hexagon socket head bolts, 5 mm.

The entire airbag unit can then be pulled down to remove it.

B8.1.2 Draining

Special features:

- There is a separate engine oil tank to the rear right of the wheel arch in front of the wheel.
- Power steering – refill container to the right of the engine compartment.
- Battery to the front left of the luggage compartment.
- Vehicle identification number in the luggage compartment in front of the fuel tank and to the bottom left of the windshield frame.

Information:

Any fuels and batteries must be stored, collected and disposed of separately in appropriate containers.

Disposal containers required for:

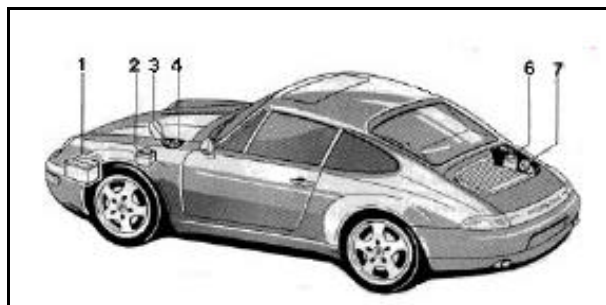
Engine/transmission oil, ATF, fuel, brake fluid, refrigerant. (windshield washing water).

The specified disposal methods and the legal requirements currently in force must be complied with when draining and storing such materials, and the relevant safety regulations, particularly those relating to handling of combustible liquids or those classified as dangerous must also be observed.

With regard to any disassembly work, please refer to the current Porsche repair instructions in the "Technology" manuals.

The following operating fluids must be disposed of:

Fluids	Unit	Approx. amount	
Engine oil	l	11.5	SAE 5W-50
Engine coolant	l	--	
Manual transmission	l	3.5	SAE 75W90
Automatic transmission	l	9	ATF
Torque converter	l	1.5	ATF
Automatic transmission final drive	l	0.9	
Power steering	l	1	ATF
Air conditioning refrigerant	g	860	R134a
Refrigerant oil	cm ³	140	ND8
Brake fluid	l	0.75	
Fuel (reserve amounts)	l	15	
Windshield washing water	l	7	



Preliminary work near the front of the vehicle

Work steps:

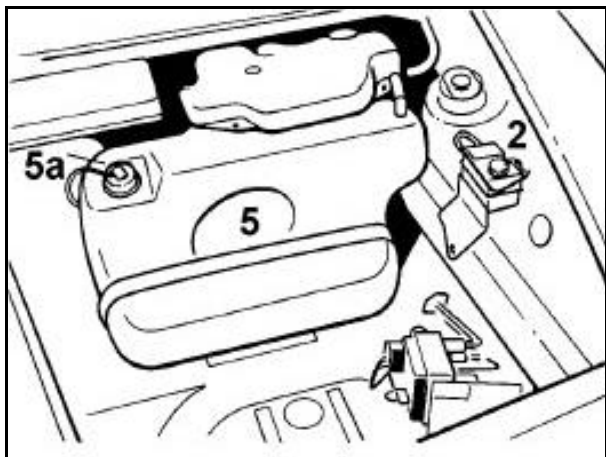
1. In order to provide more convenient access to the components to be drained, we recommend removing the luggage compartment and engine cover with pneumatic springs.
2. Remove the battery (1).
3. Extract windshield washing water (3) by suction.

Fuel system/fuel tank near the front of the vehicle

Work steps:

Comply with safety regulations!

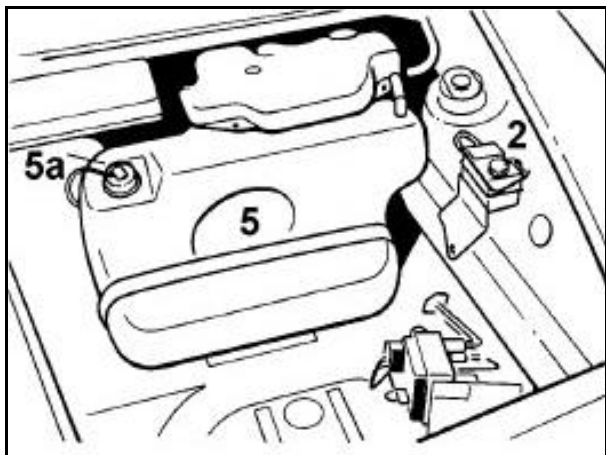
1. Extract fuel from fuel tank (5) through the fuel level sensor opening (5a) by suction.



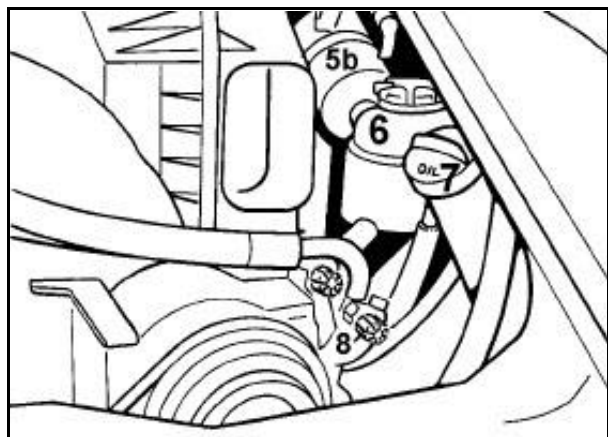
Brake system near the front of the vehicle

Work steps:

1. Attach a suitable brake fluid extraction-disposal device to the brake fluid refill container (2) in the luggage compartment and remove by suction.



Engine oil/ATF near the rear end



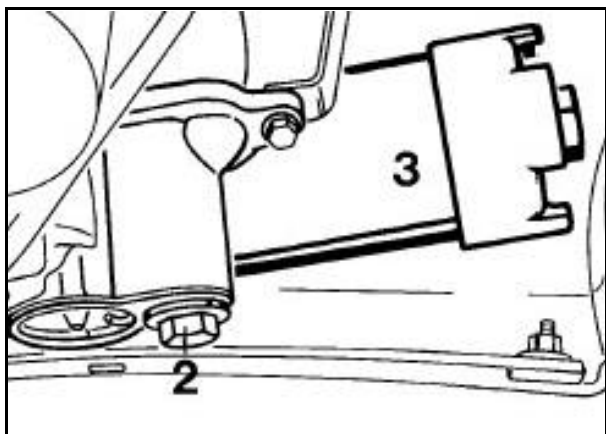
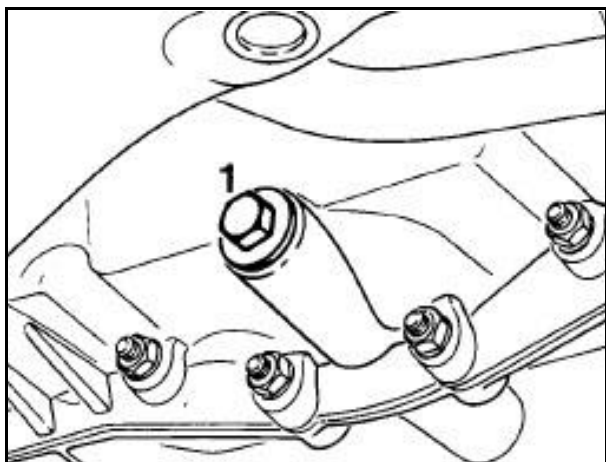
Work steps:

1. Open oil filler neck (7) in the engine compartment.
2. Open cover of refill container (6) for power steering in the engine compartment.
3. Remove ATF by suction.
4. Remove refill container.
5. Remove fuel filter (5b) in the engine compartment and drain any fuel residues.
6. Connect the air conditioning recycling device to the A/C compressor connector (8).
7. Remove refrigerant/refrigerant oil by suction.
8. Lift the vehicle.
9. Remove the entire underside panel including individual slot covers.

Engine oil near the rear end

Work steps:

1. Open the engine oil drain plug for the crankcase (1) and the drain plug (2) to the rear right of the oil tank.
2. Remove the additional oil filter (3).
3. Collect oil.
4. Release oil tank and oil lines (along the right-hand side member).
5. Remove oil tank and empty it completely.
6. Remove and empty engine oil cooler to the front right-hand side and oil lines.
7. Remove oil filter from engine.
8. Collect any oil which is draining out.
9. In the case of the automatic transmission, also remove and drain the ATF cooler to the front left, and the ATF oil lines to the automatic transmission.



Transmission oil near the rear end

Work steps:

1. Unscrew the transmission oil drain plug on the manual or automatic transmission.
2. Collect oil. Hypoid oil in the case of manual transmission, ATF in the case of automatic transmission.
3. Unscrew final drive drain plug for automatic transmission – collect oil (hypoid oil).

Automatic transmission near the rear end

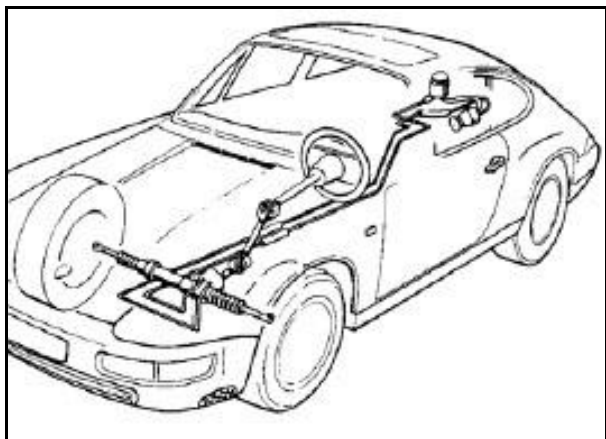
Work steps:

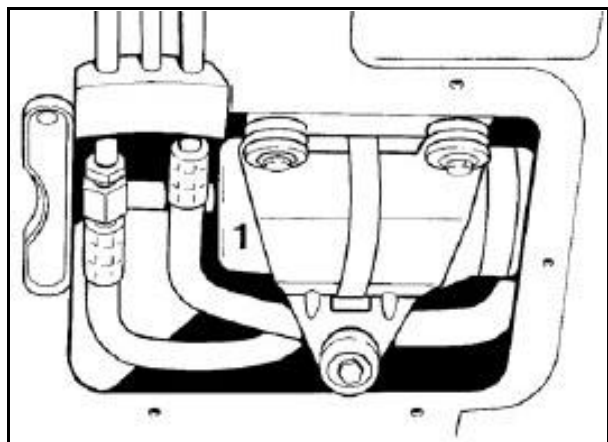
1. In order to empty the torque converter, remove motor transmission unit.
2. Disconnect automatic transmission from the engine flange.
3. Remove torque converter.
4. Drill into the circumference of the converter housing (\varnothing 8– 10 mm).
5. Drain torque converter (ATF).

Steering near the rear end

Work steps:

1. Remove and empty oil lines from the power pump on the engine to the steering gear.
2. Remove the steering gear and empty.





Fuel system near the rear end

Work steps:

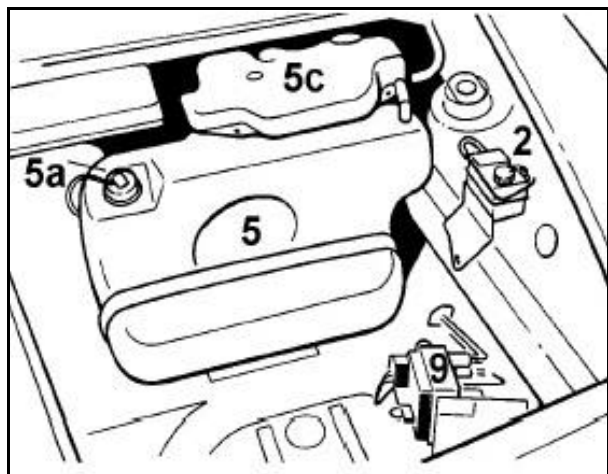
Comply with safety regulations!

1. Release fuel pump (1) and hose lines (to the front left of the floor slot) from/to the fuel tank.
2. Remove and empty fuel pump.
3. Remove and empty all fuel lines.
4. Release carbon canister to rear left of the wheel arch, disconnect hoses.
5. Remove carbon canister and drain any residue.

Brake system near the rear end

Work steps:

1. Connect brake caliper bleeder screws to the disposal container.
2. Open all the bleeder screws.
3. Switch on the disposal device.
4. In order to empty the main brake cylinder, extract brake fluid while pressing the brake pedal.
5. Remove and empty all brake lines.



Shock absorber near the rear end

Work steps:

1. Do not remove front spring struts or shock absorbers, or the steering power pump on the engine until complete disassembly work is carried out.

Information:

Gas-filled shock absorbers may have been fitted.

Identification method – the shock absorber piston rod is automatically extended by the gas pressure. "Bilstein" shock absorbers are gas-filled shock absorbers.

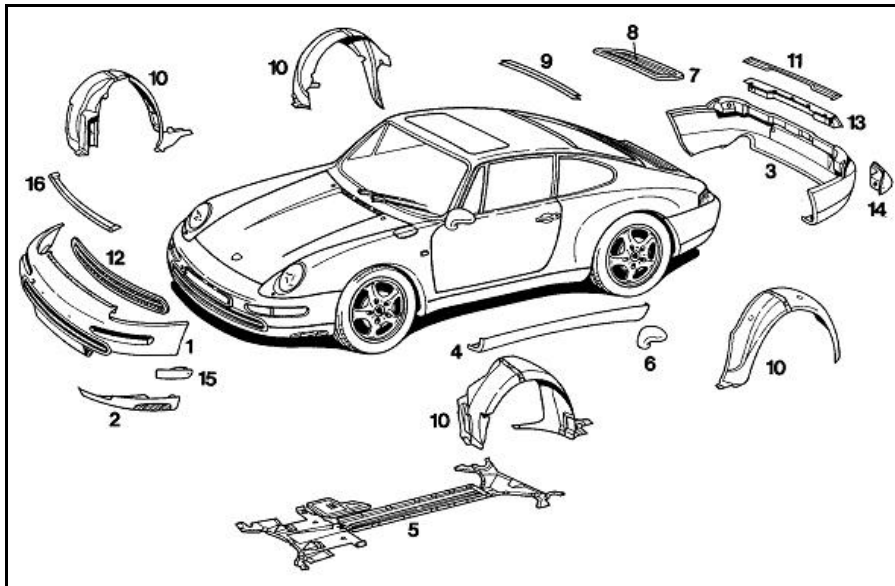
2. Lower vehicle.
3. Remove fuel tank (5) and expansion tank (5c) from the luggage compartment and drain any residue.
4. Remove brake fluid container (2) and drain any residue.
5. Remove the ABS hydraulic unit (9) and the relevant brake lines, and drain.

B8.2 Further treatment

B8.2.1 Identifying plastic parts

Note:

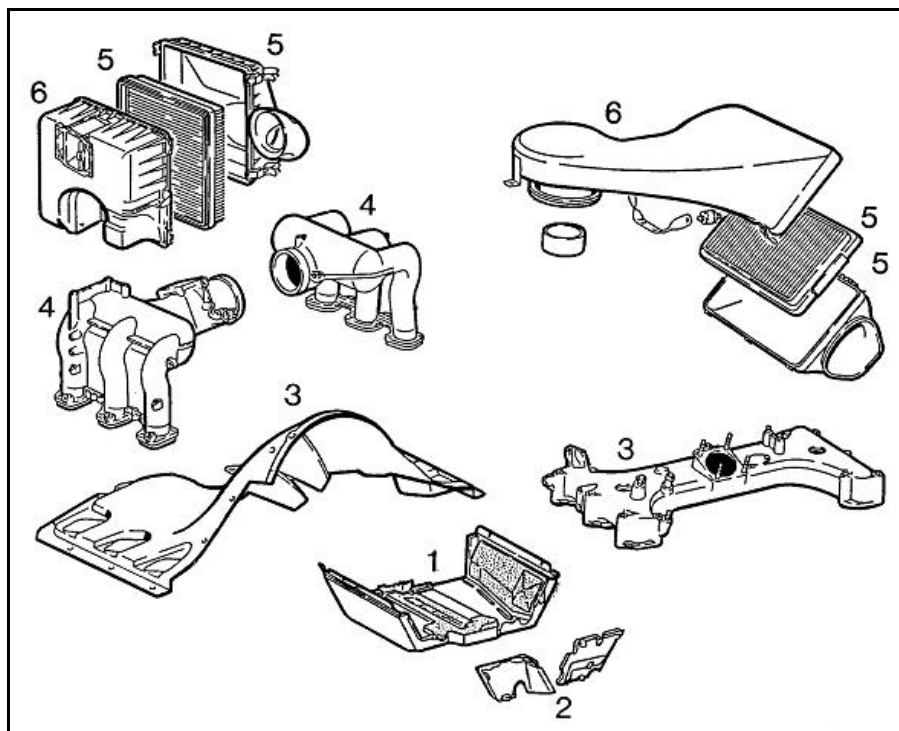
Plastic components are labelled in accordance with VDA 260 as of 50 g weight (Material information and material ID number).



911 Carrera (993)

Body outer parts

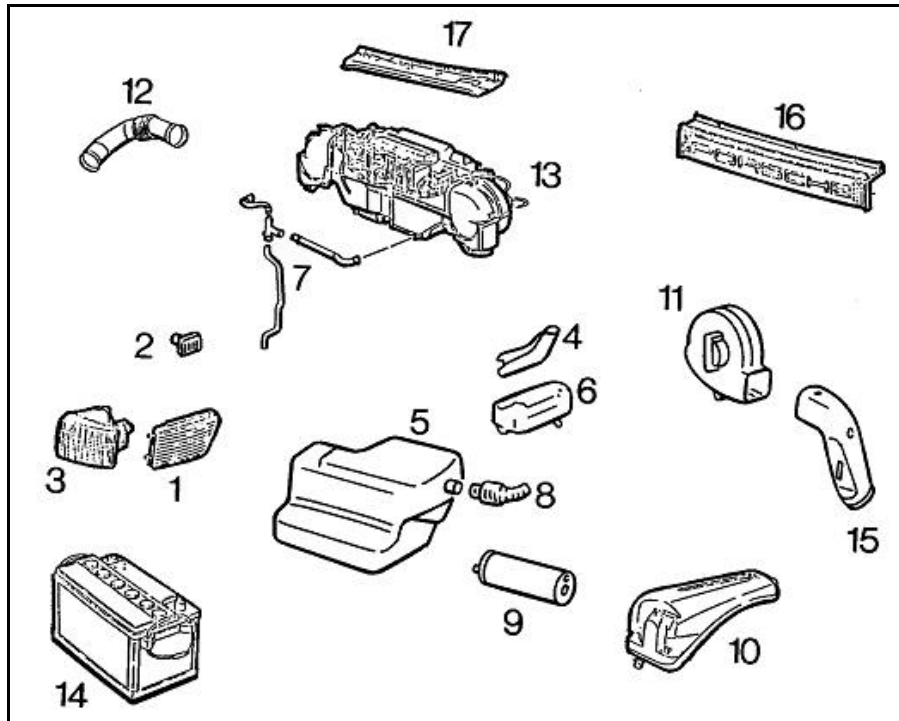
No.	Designation	Plastic
1	Front end	PP + EPDM
2	Front end, bottom part	PP + EPDM
3	Rear end	PP + EPDM
4	Side member panel	TPU
5	Underside panel	PP-GMT
6	Housing for rear-view mirror	PC-ABS
7	Rear spoiler	PA
8	Rear spoiler grille	PA
9	Roof cover	PA
10	Wheel housing liner	PP
11	Rear panel cover	PP
12	Air grille	POM
13	Rear panel	PP, PMMA
14	Rear direction indicator housing	PP, PMMA
15	Front direction indicator housing	PMMA, ABS
16	Seal	EPDM



911 Carrera (993)

Engine compartment parts

No.	Designation	Plastic
1	Engine guard	PP-GMT
2	Sound insulation pan	PET-GMT
3	Air guide	PA
4	Intake distributor	PA
5	Air filter	PP
6	Cowl for air filter	PP

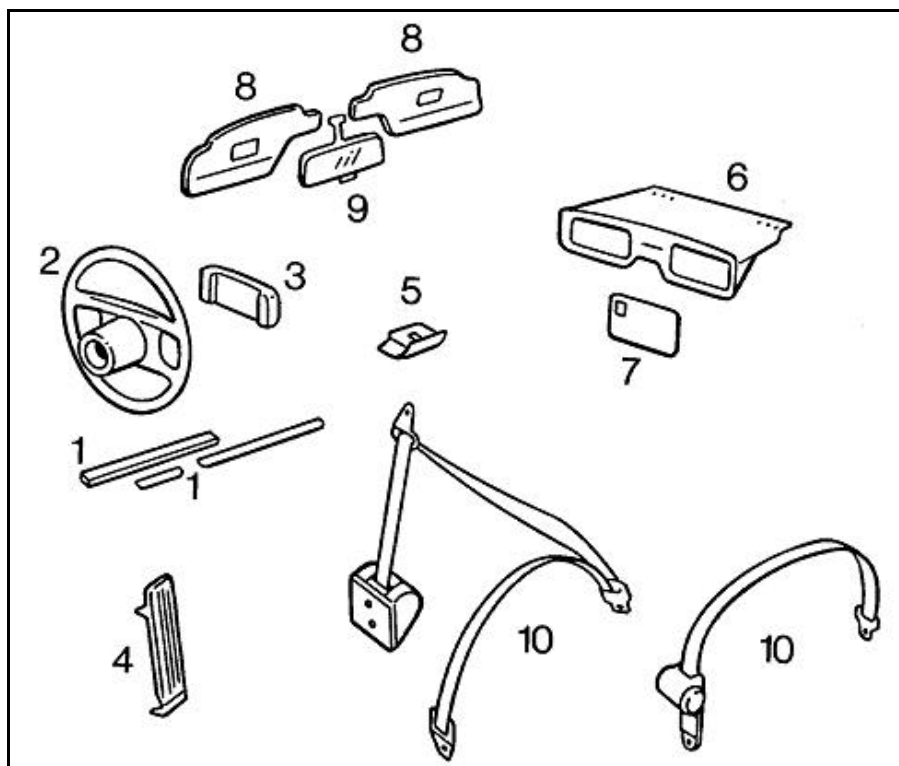


911 Carrera (993)

Equipment parts

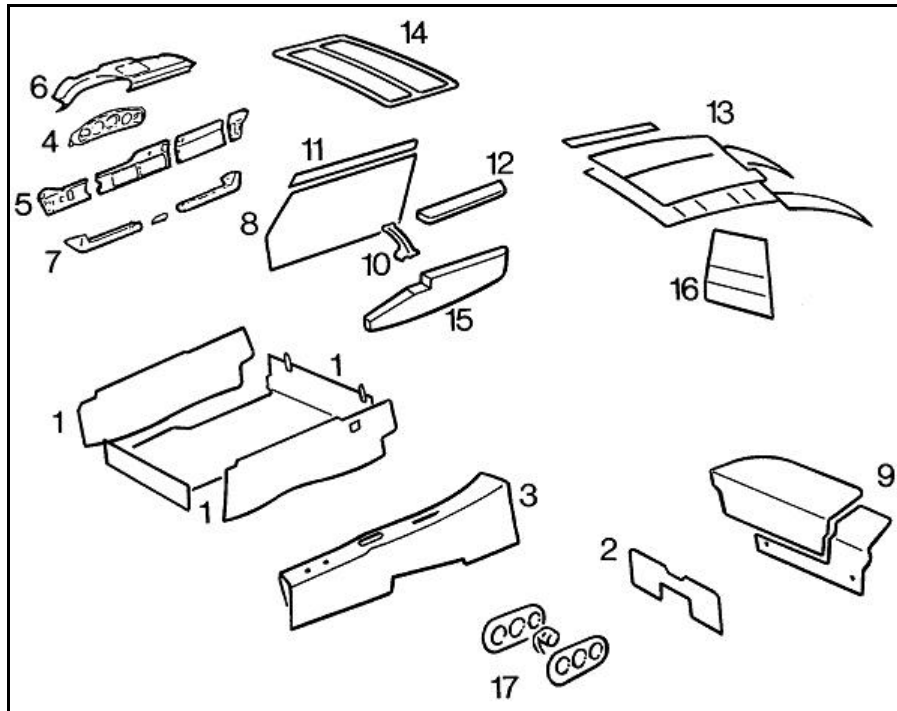
No.	Designation	Plastic
1	Side marker light	ABS, PMMA
2	Side direction indicator	ABS, PMMA
3	Front direction indicator	ABS, PMMA
4	Filler neck	HDPE
5	Fuel tank	HDPE
6	Tray for filler neck	HDPE
7	Water drainage hose	Plastic composite
8	Hose for filler neck	Plastic composite
9	Carbon canister	PP
10	Windshield washer reservoir	PP
11	Hot air blower	PP
12	Air guide	PP
13	Heater/fresh air box	PP
14	Battery casing	PP
15	Fresh air guide	PP
16	End panel	PC, PMMA
17	Cover	ABS

Passenger compartment parts



911 Carrera (993)

No.	Designation	Plastic
1	Window shaft seal	Plastic composite
2	Steering wheel	Plastic composite
3	Steering wheel cover	PUR
4	Accelerator	PP
5	Ashtray	PPE
6	Luggage storage unit	Plastic composite
7	Lid for luggage storage unit	Plastic composite
8	Sun visor	Plastic composite
9	Interior mirror	Plastic composite
10	Safety belt	PET (Fibre: PES)



911 Carrera (993)

Trim panel parts

No.	Designation	Plastic
1	Luggage compartment lining	PET (Fibre: PES)
2	Heel plate trim	PET (Fibre: PES)
3	Tunnel frame cover	PET (Fibre: PES)
4	Instrument panel trim	PUR/ABS/PVC Plastic composite
5	Dashboard trim	PUR/ABS/PVC Plastic composite
6	Instrument panel cover	PUR/ABS/PVC Plastic composite
7	Upholstery strip for knee protector	PUR/ABS/PVC Plastic composite
8	Door trim panel	PUR/PVC (composite)
9	Liner for storage unit	PE/PVC (composite)
10	Inner door handle	PUR
11	Upholstery strip, front	PUR
12	Lid for oddments compartment	PUR
13	Roof lining	PVC
14	Sliding roof lining	PVC
15	Oddments compartment	PP
16	Rear seat back trim	PET (Fibre: PES)
17	Power seat control switch	Plastic composite